

< Virtual Environment >

ENVIRONMENTAL IMPACT ASSESSMENT ONE-STOP DESIGN SERVICE

IES offers a unique building performance analysis Consultancy service. IES Consulting has a team of highly qualified, specialised, global technical Consultants who work as an integral part of your team to maximise the sustainable potential of your project.

From the earliest stages of the project we will work with your team to advise on various aspects of your buildings performance, including environmental performance and occupant comfort.

In particular, we can incorporate many of the requirements of an Environmental Impact Assessment (EIA) including:

ENERGY STRATEGY

- > Energy Strategy using the London Mayor's Energy Hierarchy - Reduce, Reuse, Recycle.

We can check the feasibility and performance of different renewable energy technologies and liaise with engineers to ensure development of a workable solution. Using the **<Virtual Environment>** software we can also produce the BRUKL report for Building Regulations as well as Energy Performance Certificates - we have a number of qualified Accredited Energy Assessors.

DAYLIGHTING/SOLAR STUDIES

- > Daylighting/Solar studies including Sun on the Ground, Right to Light and Overshadowing analysis.

We are familiar with the legal requirements and can produce the required information including overshadowing reports, right to light and daylighting studies.

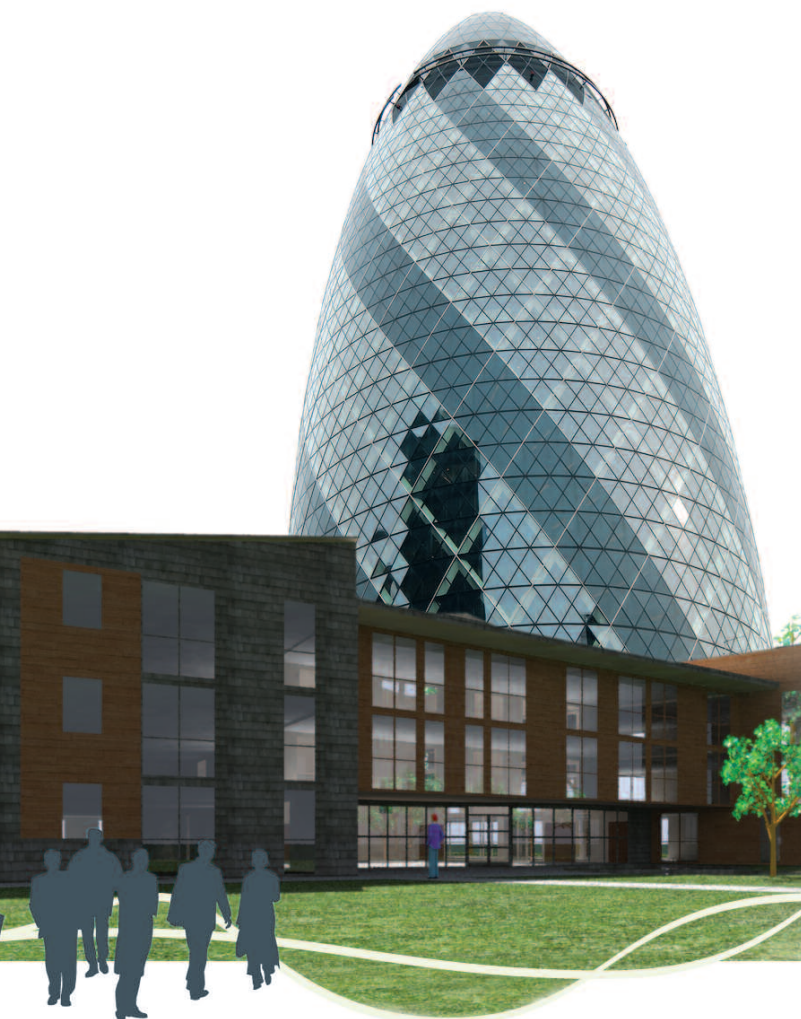
BREEAM ASSESSORS

- > BREEAM Assessment ensuring the required rating is achieved from the earliest phases of the design.

We have a number of qualified BREEAM Assessors who can incorporate the daylighting, thermal comfort and energy consumption outputs from the modelling and simulation to respond to various BREEAM credits. Our Assessors can also support the team by facilitating meetings, collating the necessary information and making the submission.

APPRAISAL

Appraisal of various options in terms of capital running costs and energy requirements.



< Virtual Environment >

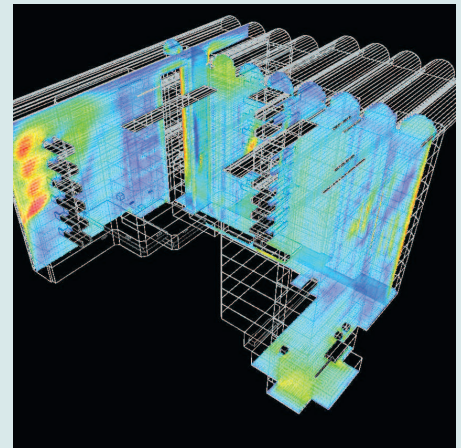
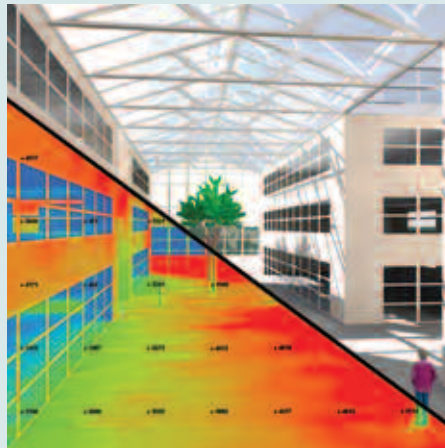
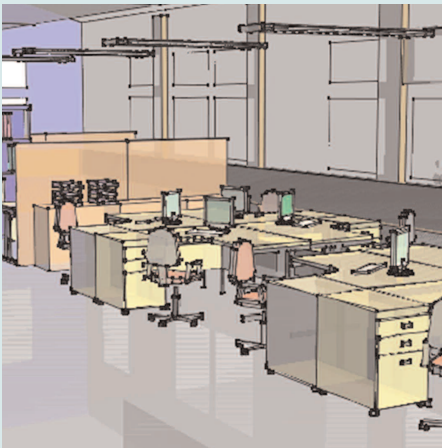
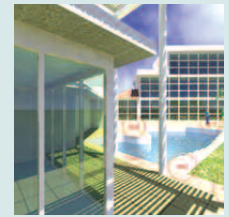
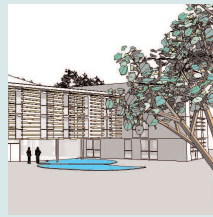
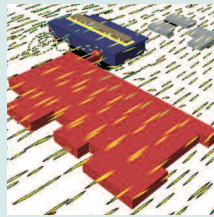
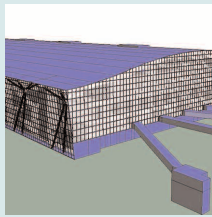
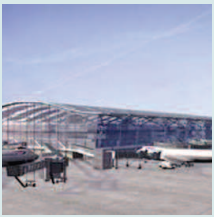
Our team of qualified engineers and sustainable design consultants use our powerful **<Virtual Environment>** software to leverage the same building information for many and varied analyses, offering a 'one-stop shop'. This reduces the complexity associated with information sharing between different disciplines, and a wide range of software applications.

The team at IES Consulting have been successfully applying our tools to commercial projects for many years now. Some of the projects we have worked on are:

> **ROYAL LONDON
HOSPITAL, LONDON**
> **T5 HEATHROW AIRPORT,
LONDON**

> **SWISS RE HQ, LONDON**
> **MGM CITY CENTER GRAND,
LAS VEGAS**

> **DUBAI INTERNATIONAL
CONVENTION CENTRE,
DUBAI**



If you would like any further information please visit our website www.iesve.com, email consultancy@iesve.com or call +44 (0) 141 945 8500

IES HEADQUARTERS

Helix Building,
West of Scotland Science Park
Glasgow, G20 OSP, UK

T +44 (0)141 945 8500

E enquiries@iesve.com

BOSTON

43 Kingston Street,
Fifth Floor,
Boston,
MA 02111-2241,
USA

T +1 617 426 1890

SAN FRANCISCO

100 Bush Street,
Suite 1500,
San Francisco,
California, CA 94104
USA

T +1 415 983 0603

IRELAND

Fifth Floor,
Castleforbes House,
Castleforbes Road,
Dublin 1,
Ireland

T +353 (1) 875 0104

AUSTRALIA

Level 1,
123 Camberwell Road,
Hawthorn East,
Melbourne,
Vic 3123, Australia

T +61 (0)3 9808 8431